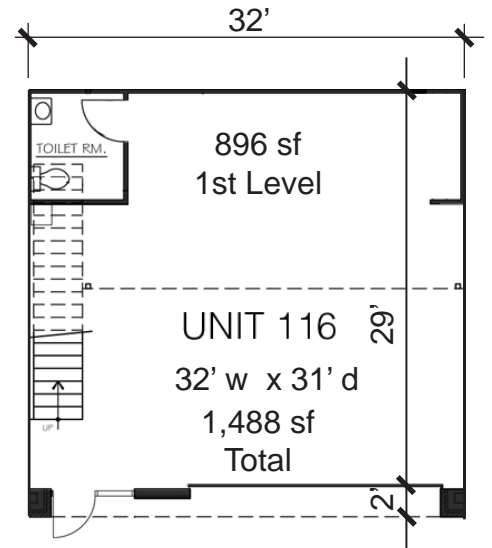




# Dominion *Lux* UNIT 116



View of Double Garage with metal wallpanels, coffee bar, wetbar and epoxy flooring.



Double Garage plan

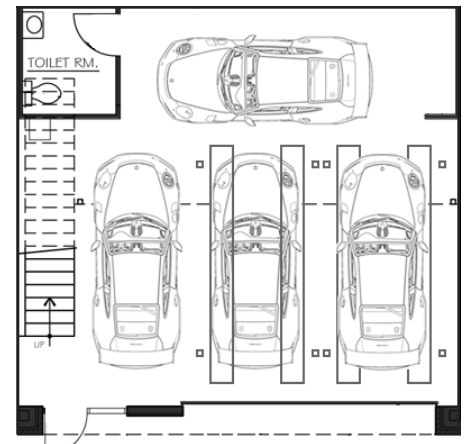
### Double Unit 116 Description

Unit 116 includes a mezzanine, which overlooks the soaring 22' high space. The exceptional finishes were chosen with both durability and elegance in mind. Each unit includes: metal handrails, full bathrooms, designer lighting, a utility sink, 150 amps of power, full heating/cooling, and automatic sprinkler system. The unit can also be fully customized with metal clad walls, exquisite Snaidero Pininfarina Coffee bars, unique Wet bars, custom storage, your choice of flooring.

Area: 1,488 sf. (896 sf 1st lvl.)  
 Dimensions: 32' wide x 31' deep  
 Price: \$ 295,000

### Available Unit Upgrades

- Aluminum wall panels
- Epoxy floor coating system
- Coffeebar w/ additional storage
- Mezzanine flooring
- Mezzanine Wetbar with stone countertops



six car capacity