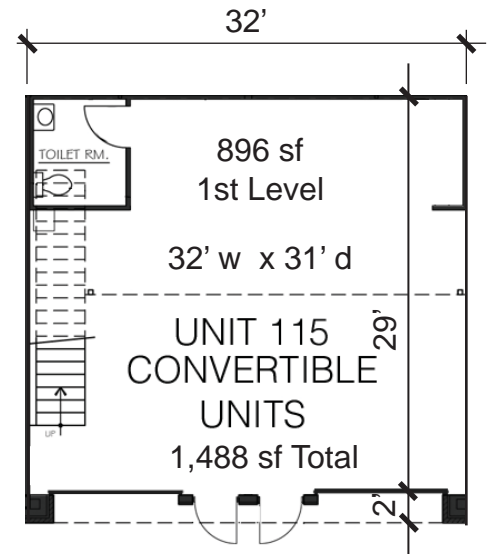




# Dominion *Lux* UNIT 115



View of Double Garage with metal wallpanels, coffee bar, wetbar and epoxy flooring.



Double Garage plan

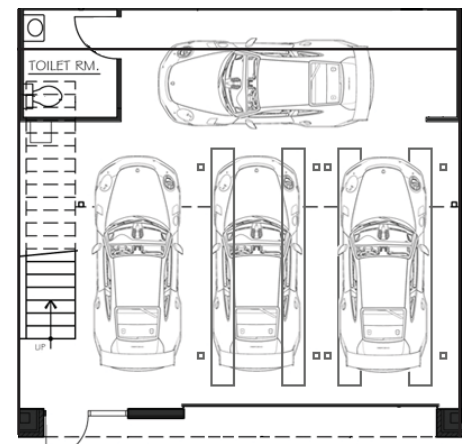
## Double Unit 115 Description

Unit 115 includes a mezzanine, which overlooks the soaring 22' high space. The exceptional finishes were chosen with both durability and elegance in mind. Each unit includes: metal handrails, full bathrooms, designer lighting, a utility sink, 150 amps of power, full heating/cooling, and automatic sprinkler system. The unit can also be fully customized with metal clad walls, exquisite Snaidero Pininfarina Coffee bars, unique Wet bars, custom storage, your choice of flooring. This garage may be converted into two Single Garages that are sold separately. Please contact Dominion Lux for additional information.

Area: 1,488 sf. (896 sf 1st lvl.)  
 Dimensions: 32' wide x 31' deep  
 Price: \$ 295,000

## Available Unit Upgrades

- Aluminum wall panels
- Epoxy floor coating system
- Coffeebar w/ additional storage
- Mezzanine flooring
- Mezzanine Wetbar with stone countertops



six car capacity