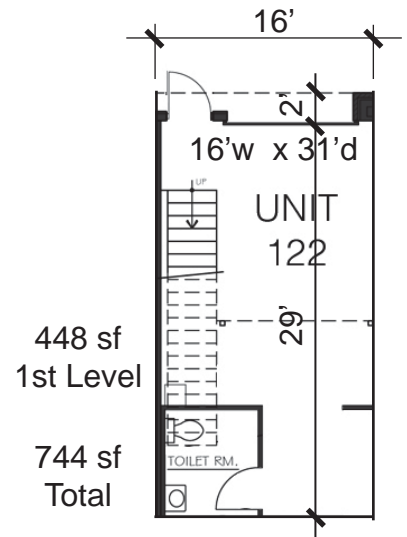




Dominion *Lux* UNIT 122



View of Double Garage with metal wallpanels, coffee bar, wetbar and epoxy flooring.



Single Garage plan

Single Unit 122 Description

Unit 122 includes a mezzanine, which overlooks the soaring 22' high space. The exceptional finishes were chosen with both durability and elegance in mind. Each unit includes: metal handrails, full bathrooms, designer lighting, a utility sink, 150 amps of power, full heating/cooling, and automatic sprinkler system. The unit can also be fully customized with metal clad walls, exquisite Snaidero Pininfarina Coffee bars, unique Wet bars, custom storage, your choice of flooring.

Area:

Dimensions:

Price:

744 sf. (448 sf 1st fl)

16' wide x 31' deep

\$ 195,000

Available Unit Upgrades

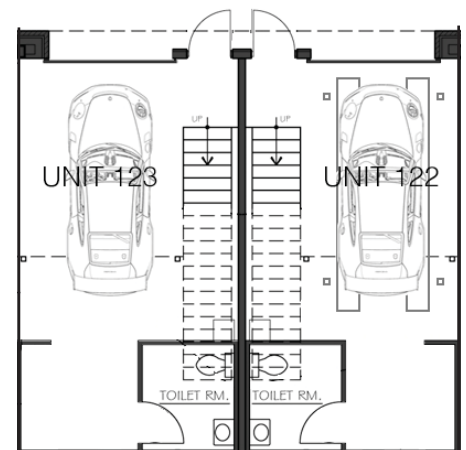
Aluminum wall panels

Epoxy floor coating system

Coffeebar w/ additional storage

Mezzanine flooring

Mezzanine Wetbar with stone countertops



Two car capacity